

SRI LANKA STANDARD 447:1978
UDC 694.6:69.028.1:674.11

**RECOMMENDED DIMENSIONS FOR
WOOD DOORSETS**

BUREAU OF CEYLON STANDARDS

RECOMMENDED DIMENSIONS FOR
WOOD DOORSETS

SLS 447:1978

Gr. 3

Copyright Reserved

BUREAU OF CEYLON STANDARDS
53, Dharmapala Mawatha,
Colombo 3,
Sri Lanka.

Sri Lanka Standards are subject to periodical revision in order to accommodate the progress made by industry. Suggestions for improvement will be recorded and brought to the notice of the Committees to which the revisions are entrusted.

This Standard does not purport to include all the necessary provisions of a contract.

SRI LANKA STANDARD
RECOMMENDED DIMENSIONS FOR
WOOD DOORSETS

FOREWORD

This Sri Lanka Standard was prepared by the Drafting Committee on Modular Co-ordination, under the authority of the Civil Engineering Divisional Committee of the Bureau of Ceylon Standards and was authorized for adoption and publication by the Council of the Bureau on 1978-12-01.

This standard is part of a series of specifications concerning modular co-ordination concepts in building. The concept of the doorleaf and frame being combined into a single component known as the *doorset* and the need for standardization of door leaves for all doorset combinations has set the parameters for the proposed dimensions.

The units used in the system are the International System of Units (SI).

1 SCOPE

This standard specification covers the dimensional, constructional and design requirements for doorsets made out of wood.

2 DEFINITIONS

For the purpose of this standard the definitions given in SLS 359* together with the following definitions shall apply.

2.1 **doorset:** An assembly including a fixed part (the doorframe) and one or more moveable parts (the door leaves) and their hardware the function of which is to allow or prevent access.

2.2 **glazing bar:** A twice rebated member dividing a light into panes.

2.3 **head:** The horizontal top member of a frame.

2.4 **jamb:** A vertical side member of a windowframe or doorframe.

2.5 **mortice:** A hole or slot to receive a tenon of corresponding size.

2.6 **mullion:** An intermediate verticle member of a doorframe.

2.7 **panel:** A filling to a space surrounded by framing of the sash.

2.8 **rebate:** A step shaped reduction formed on the edge of a member.

2.9 **sash:** A moving part of a door.

2.10 **tenon:** A projection at the end of one framed member of lesser cross section than the member, and intended to fit into a corresponding mortice in the other member to which it is thereby joined.

*SLS 359 *Glossary of terms used in the building industry with special reference to modular co-ordination.*

3 GENERAL REQUIREMENTS

3.1 Timber

The timber used shall comply with the requirements specified in SLS 263* for the non-structural class. If plywood is used it shall comply with the requirements given in SLS 261**.

4 REQUIREMENTS FOR DOORFRAMES

4.1 Construction

The doorframes shall be supplied completely assembled, or in knockdown component form. All joints shall be morticed and tenoned. The tenons shall close fit in the mortices and pinned with non rusting metal dowels or medium hardwood pins of not less than 10 mm diameter. The joints shall be packed solid with wood adhesives or lead based paint.

All assembled doorframes shall be cramped together so as to be square and flat. Each assembled doorframe shall have a temporary diagonal brace fitted inside the rebates and shall be fitted with temporary stretchers at the feet of the jambs to avoid damage in transit.

The surfaces normally exposed to view after installation shall be true, clean, sanded smooth and without application of fillers.

4.2 The frames for doors shall be as shown in Figures 1 A and 1 B.

4.3 Dimensions

The sizes of doorframes shall be as given in Table 1.

*SLS 263 *Building timber*

**SLS 261 *Plywood for general purposes*

4.4 Rebate of the doorframe

The rebate of the doorframe shall be the thickness of the doorsash plus 2 mm.

4.5 Where ventilation is required above the doorframe it shall be constructed with jambs in the knockdown form, of preferred sizes 25 M, 26 M, or 27 M. The infill can be of any desired form.

NOTE - $M = 1 \text{ module (100 mm)}$

5 REQUIREMENTS FOR DOOR LEAVES

5.1 Dimensions

The door leaves shall be supplied in sizes as indicated in Table 1.

5.2 Tolerances

5.2.1 Squareness

The difference between the length of the diagonals of a doorsash shall not exceed 3 mm.

5.2.2 Flatness

When a door is placed so that three of its corners are in contact with a plane surface, the perpendicular distance from the plane surface to the 4th corner of the door shall not exceed 5 mm.

6 POSITION OF HINGES AND LOCK

The position of the centre lines of fixing blocks of hinges if required and the centre line of the fixing block for the lock/latch shall be as shown in Figure 2.

TABLE 1 - Principal dimensions of doorsets

Symbol (See Fig. 1A and 1B)	Description	Size designation		
		21M x 8M	21M x 9M	21M x 11M
		Sizes in mm		
A	Co-ordinating dimension height of doorset	2100	2100	2100
B	Co-ordinating dimension width of doorset	800	900	1100
A ₂	Work size: height of doorset	2095 ⁺⁴ ₋₂	2095 ⁺⁴ ₋₂	2095 ⁺⁴ ₋₂
B ₂	Work size: width of doorset	790 ^{+2.0}	890 ^{+2.0}	1090 ^{+2.0}
D	Width of doorleaf	712 ⁺² ₋₁	812 ⁺² ₋₁	1012 ⁺² ₋₁
D'	Dimensions within rebates	716	816	1016
T	Thickness of doorleaf (not important for dimensional co-ordination)	37 ⁺⁴ ₋₂		

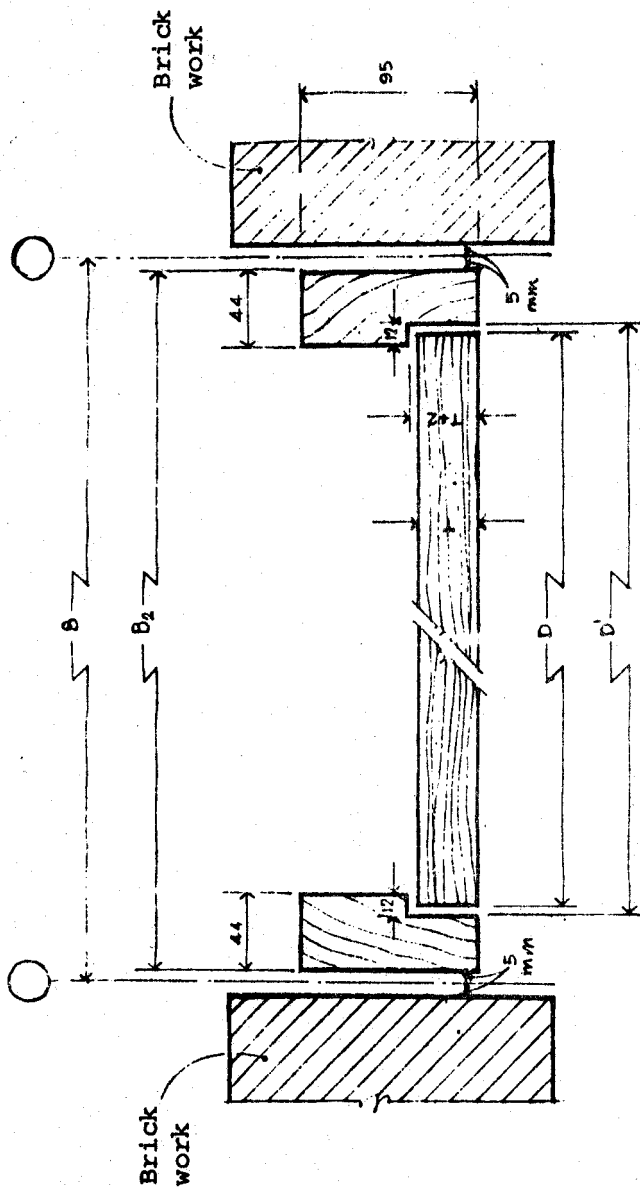


FIGURE 1a - Plan of door set

Dimensions in millimetres

8 m x 21 m door set

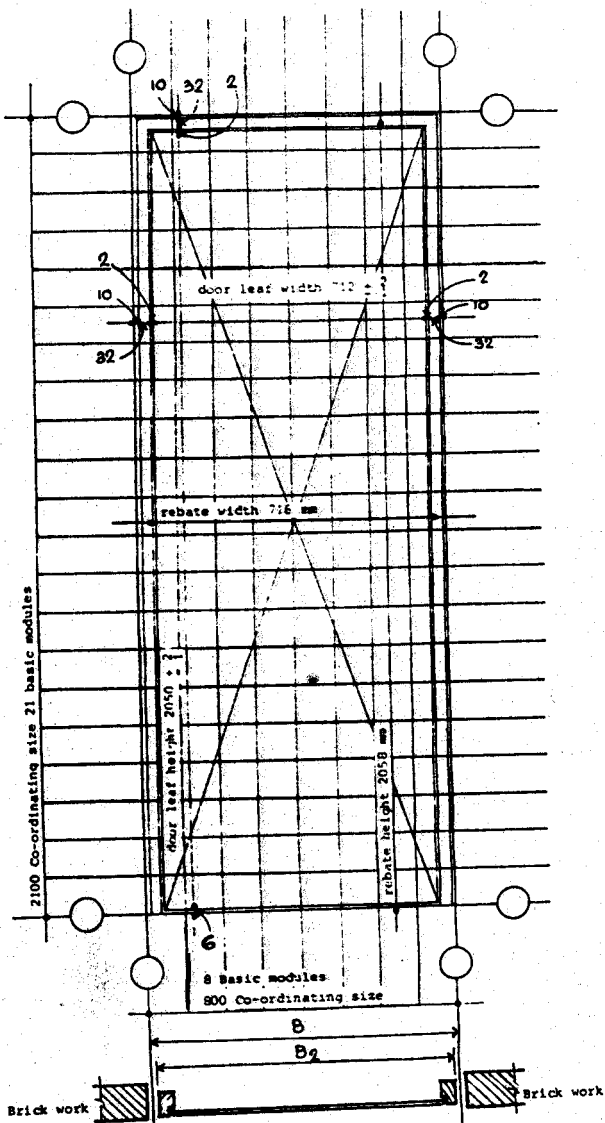


FIGURE 1b - Plan and elevation of door set
Dimensions in millimetres

Dimensions in millimetres

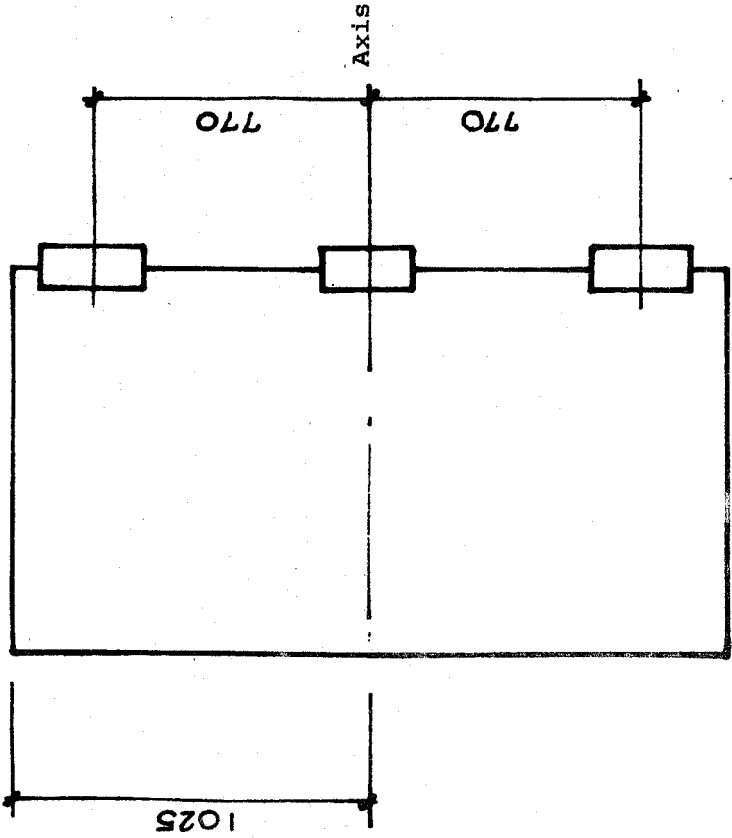


FIGURE 2 - Position of hinges and lock

SLS CERTIFICATION MARK

The Sri Lanka Standards Institution is the owner of the registered certification mark shown below. Beneath the mark, the number of the Sri Lanka Standard relevant to the product is indicated. This mark may be used only by those who have obtained permits under the SLS certification marks scheme. The presence of this mark on or in relation to a product conveys the assurance that they have been produced to comply with the requirements of the relevant Sri Lanka Standard under a well designed system of quality control inspection and testing operated by the manufacturer and supervised by the SLSI which includes surveillance inspection of the factory, testing of both factory and market samples.

Further particulars of the terms and conditions of the permit may be obtained from the Sri Lanka Standards Institution, 17, Victoria Place, Elvitigala Mawatha, Colombo 08.



SRI LANKA STANDARDS INSTITUTION

The Sri Lanka Standards Institution (SLSI) is the National Standards Organization of Sri Lanka established under the Sri Lanka Standards Institution Act No. 6 of 1984 which repealed and replaced the Bureau of Ceylon Standards Act No. 38 of 1964. The Institution functions under the Ministry of Science & Technology.

The principal objects of the Institution as set out in the Act are to prepare standards and promote their adoption, to provide facilities for examination and testing of products, to operate a Certification Marks Scheme, to certify the quality of products meant for local consumption or exports and to promote standardization and quality control by educational, consultancy and research activity.

The Institution is financed by Government grants, and by the income from the sale of its publications and other services offered for Industry and Business Sector. Financial and administrative control is vested in a Council appointed in accordance with the provisions of the Act.

The development and formulation of National Standards is carried out by Technical Experts and representatives of other interest groups, assisted by the permanent officers of the Institution. These Technical Committees are appointed under the purview of the Sectoral Committees which in turn are appointed by the Council. The Sectoral Committees give the final Technical approval for the Draft National Standards prior to the approval by the Council of the SLSI.

All members of the Technical and Sectoral Committees render their services in an honorary capacity. In this process the Institution endeavours to ensure adequate representation of all view points.

In the International field the Institution represents Sri Lanka in the International Organization for Standardization (ISO), and participates in such fields of standardization as are of special interest to Sri Lanka.