

**SRI LANKA STANDARD 1320: PART 3 : 2007**  
**ISO 4249-3 :2004**

**SIZE DESIGNATION AND DIMENSIONS  
FOR MOTORCYCLE TYRES AND RIMS  
(CODE DESIGNATED SERIES)  
PART 3: RIMS**

**SRI LANKA STANDARDS INSTITUTION**



**SRI LANKA STANDARD**  
**SIZE DESIGNATION AND DIMENSIONS FOR MOTORCYCLE TYRES AND RIMS**  
**(CODE DESIGNATED SERIES)**  
**PART 3: RIMS**

**SLS 1320 : Part 3 : 2007**  
**ISO 4249-3 :2004**  
**(Superseding SLS 901 : Part 1: 1990 Section 3)**

Gr. F

**SRI LANKA STANDARDS INSTITUTION**  
**17, Victoria Place**  
**Elvitigala Mawatha**  
**Colombo - 08**  
**SRI LANKA**

Sri Lanka Standards are subject to periodical revision in order to accommodate the progress made by industry. Suggestions for improvement will be recorded and brought to the notice of the Committees to which the revisions are entrusted.

This standard does not purport to include all the necessary provisions of a contract.

© SLSI 2007

All rights reserved. Unless otherwise specified, no part of this publication may be reproduced or utilized in any form or by any means, electronic or mechanical, including photocopying and microfilm, without permission in writing from the SLSI.

**SRI LANKA STANDARD**  
**SIZE DESIGNATION AND DIMENSIONS FOR MOTORCYCLE TYRES AND RIMS**  
**(CODE DESIGNATED SERIES)**  
**PART 3: RIMS**

**NATIONAL FOREWORD**

This Sri Lanka Standard was approved by the Sectoral Committee on Chemical and Polymer Technology and was authorized for adoption and publication as a Sri Lanka Standard by the Council of the Sri Lanka Standards Institution on 2007-11-28.

This Sri Lanka Standard is identical with ISO 4249-3 : 2004 : Motorcycle tyres and rims (code designated series) Part 3- Rims, published by the International Organization for Standardization (ISO).

The text of the International Standard has been accepted as suitable for publication without deviation, as a Sri Lanka Standard. However, certain terminology and conventions are not identical with those used in Sri Lanka Standards.

Attention is therefore drawn to the following :

**TERMINOLOGY AND CONVENTIONS :**

The text of the International Standard has been accepted as a suitable for publication, without deviation, as a Sri Lanka Standard. However, certain terminology and conventions are not identical with those used in Sri Lanka Standards, attention is therefore drawn to the following:

- a) Wherever the words 'International Standard/Publication' appear referring to this standard they should be interpreted as "Sri Lanka Standard" .
- b) The comma has been used throughout as a decimal marker. In Sri Lanka Standards it is the current practice to use the full point at the base line as the decimal marker.
- c) Wherever page numbers are quoted, they are ISO/IEC page numbers.



# INTERNATIONAL STANDARD

**ISO**  
**4249-3**

Fifth edition  
2004-11-15

---

---

## **Motorcycle tyres and rims (code-designated series) —**

### **Part 3: Rims**

*Pneumatiques et jantes pour motocycles (séries dont les dimensions  
sont désignées par des codes) —*

*Partie 3: Jantes*



Reference number  
ISO 4249-3:2004(E)

**PDF disclaimer**

This PDF file may contain embedded typefaces. In accordance with Adobe's licensing policy, this file may be printed or viewed but shall not be edited unless the typefaces which are embedded are licensed to and installed on the computer performing the editing. In downloading this file, parties accept therein the responsibility of not infringing Adobe's licensing policy. The ISO Central Secretariat accepts no liability in this area.

Adobe is a trademark of Adobe Systems Incorporated.

Details of the software products used to create this PDF file can be found in the General Info relative to the file; the PDF-creation parameters were optimized for printing. Every care has been taken to ensure that the file is suitable for use by ISO member bodies. In the unlikely event that a problem relating to it is found, please inform the Central Secretariat at the address given below.

© ISO 2004

All rights reserved. Unless otherwise specified, no part of this publication may be reproduced or utilized in any form or by any means, electronic or mechanical, including photocopying and microfilm, without permission in writing from either ISO at the address below or ISO's member body in the country of the requester.

ISO copyright office  
Case postale 56 • CH-1211 Geneva 20  
Tel. + 41 22 749 01 11  
Fax + 41 22 749 09 47  
E-mail [copyright@iso.org](mailto:copyright@iso.org)  
Web [www.iso.org](http://www.iso.org)

Published in Switzerland



## Contents

Page

Foreword.....	iv
1 Scope.....	1
2 Normative references .....	1
3 Finish.....	1
4 Designation.....	3
5 Cylindrical bead seat .....	3
6 Tapered bead seat rims (MT type).....	4
7 Permitted rim widths.....	8
Annex A (informative) Rim circumference measurement — Tapered bead seat (MT type) rims .....	9
Bibliography .....	11

## Foreword

ISO (the International Organization for Standardization) is a worldwide federation of national standards bodies (ISO member bodies). The work of preparing International Standards is normally carried out through ISO technical committees. Each member body interested in a subject for which a technical committee has been established has the right to be represented on that committee. International organizations, governmental and non-governmental, in liaison with ISO, also take part in the work. ISO collaborates closely with the International Electrotechnical Commission (IEC) on all matters of electrotechnical standardization.

International Standards are drafted in accordance with the rules given in the ISO/IEC Directives, Part 2.

The main task of technical committees is to prepare International Standards. Draft International Standards adopted by the technical committees are circulated to the member bodies for voting. Publication as an International Standard requires approval by at least 75 % of the member bodies casting a vote.

Attention is drawn to the possibility that some of the elements of this document may be the subject of patent rights. ISO shall not be held responsible for identifying any or all such patent rights.

ISO 4249-3 was prepared by Technical Committee ISO/TC 31, *Tyres, rims and valves*, Subcommittee SC 10, *Cycle, moped, motorcycle tyres and rims*.

This fifth edition cancels and replaces the fourth edition (ISO 4249-3:1997), which has been technically revised. It also incorporates the Amendment ISO 4249-3:1997 Amd. 1:2001.

ISO 4249 consists of the following parts, under the general title *Motorcycle tyres and rims (code-designated series)*:

- *Part 1: Tyres*
- *Part 2: Tyre load ratings*
- *Part 3: Rims*

# Motorcycle tyres and rims (code-designated series) —

## Part 3: Rims

### 1 Scope

This part of ISO 4249 specifies the rim dimensions for a selection of rims for motorcycle tyres. It sets only those rim contour dimensions necessary for tyre mounting, and for fitting the tyre to the rim.

### 2 Normative references

The following referenced documents are indispensable for the application of this document. For dated references, only the edition cited applies. For undated references, the latest edition of the referenced document (including any amendments) applies.

ISO 4249-1:1985, *Motorcycle tyres and rims (Code designated series) — Part 1: Tyres*

### 3 Finish

#### 3.1 Rim contour

The rim on the side of the tyre shall be smoothly contoured and free of sharp edges.

#### 3.2 Rim valve hole

**3.2.1** The rim valve hole shall be centred on the bottom of the rim well. On the tyre side, the edges shall be rounded or chamfered. On the hub side, the edges shall be free of burrs, which could damage the valve.

Dimensions and tolerances of valve holes shall be as shown in Figure 1.

**3.2.2** The rim hole shall have a diameter of  $8,3^{+0,3}_0$  mm. See Figure 1 a).

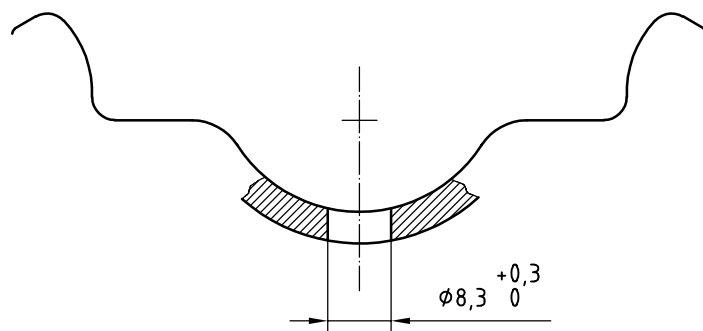
For the fitment of tubeless valves, a circumferential flat area of at least 14,5 mm is required on the tyre side of the rim. The maximum thickness of the rim at the rim hole shall be 9,4 mm. See Figure 1 b).

At the request of the motorcycle manufacturer, rim holes of  $11,3^{+0,4}_0$  mm diameter may be provided; in this case, the flat area around the hole shall be at least 19 mm diameter.

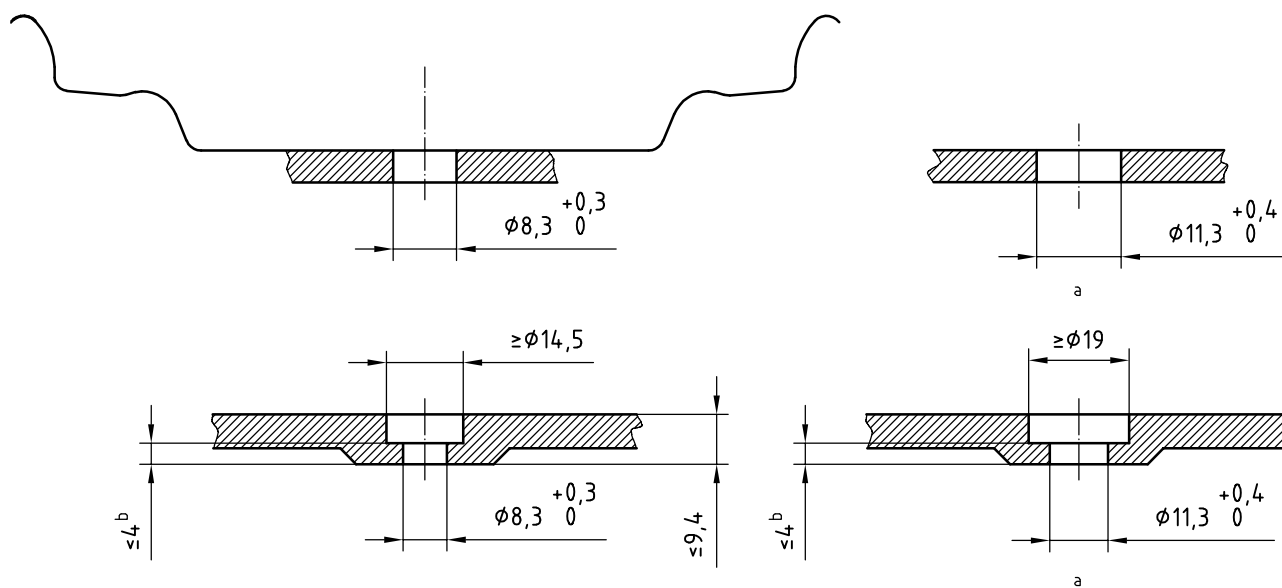
For the possibility of off-centre positioning, see Figure 1 c).

**3.2.3** The rim shall be counter-bored at the valve hole to reduce the thickness to 4 mm maximum for seating snap-in valves.

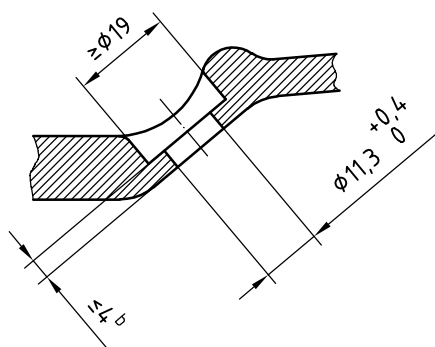
Dimensions in millimetres



a) Tube-type valve



b) Tubeless valves



c) Off-centre (optional)<sup>c</sup>

a Optional.

b See 3.2.3.

c For rim codes MT 3.00 and larger, if the well contour offers sufficient space for the location of the flat area, the valve hole may be positioned on the sidewall of the well.

Figure 1 — Valve hole dimensions

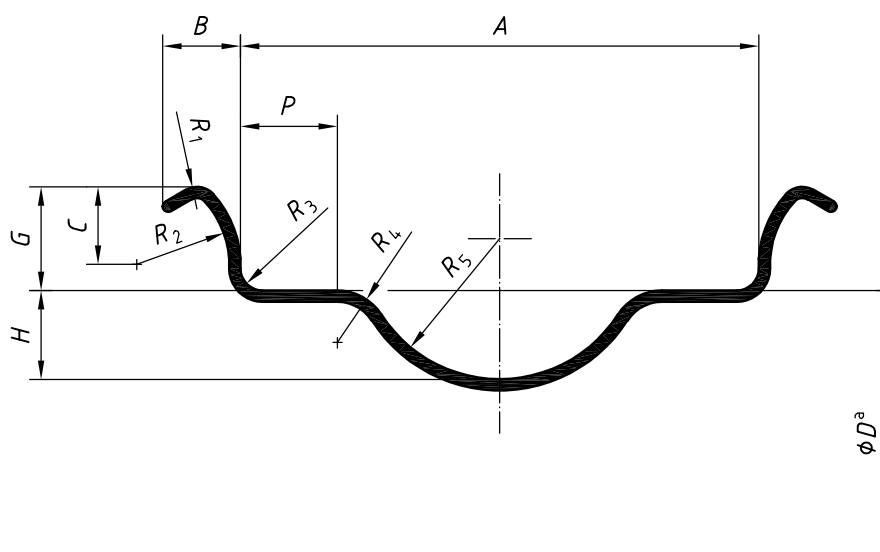
## 4 Designation

The rim shall be designated by its nominal rim diameter code and nominal rim width (for example, 18 × 1.85 or 17M/C × MT 3.50). See also ISO 3911.

## 5 Cylindrical bead seat

### 5.1 Rim contours

Dimensions and tolerances of the cylindrical bead seat rims shall be as shown in Figure 2 and as given in Table 1.



<sup>a</sup> See Table 2.

Figure 2 — Cylindrical bead seat rims

Table 1 — Dimensions of cylindrical bead seat rims

Dimensions in millimetres

Nominal rim width inches	A	B	G	H	P	C	R <sub>2</sub>	R <sub>1</sub>	R <sub>3</sub>	R <sub>4</sub>	R <sub>5</sub>
	<sup>+1</sup> <sub>-0,5</sub>	min.	± 0,5	<sup>+1</sup> <sub>-0,5</sub>	min.			min.	max.	min.	min.
1.10	28	5	7	7	3	5	5,5	1,5	1,5	5	7
1.20	30,5	5,5	9			5,5	6				
1.35	34	6,5	10	7,5	3,5	6	6,5	2	2	5,5	10
1.40	36			8							
1.50	38	7,5	10,5	9	4,5	7,5	8	2	2	6	11,5
1.60	40,5		12								4,5
1.85	47	8,5	14	9	5	10,5	12,5	2	2	6	15
2.15	55				7,5						7,5
2.50	63,5	9,5	14	12	11	10,5	12,5	3	3	7	19
2.75	70	10,5									
3.00	76		10,5	12	11	11	10,5	12,5	3	3	7

## 5.2 Rim diameters

Nominal rim diameter code, specified diameters and circumferences shall be as given in Table 2.

**Table 2 — Specified rim diameters and circumferences for cylindrical bead seat rims**

Dimensions in millimetres

Nominal rim diameter code <sup>a</sup>	Specified rim diameter $D$	Specified rim circumference $\pi D$ +2 -0,5
14	357,1	1 121,9
15	382,5	1 201,7
16	405,6	1 274,2
17	433,3	1 361,2
18	458,7	1 441
19	484,1	1 520,8
20	509,5	1 600,6
21	534,9	1 680,4
22	558,8	1 755,5
23	584,2	1 835,3

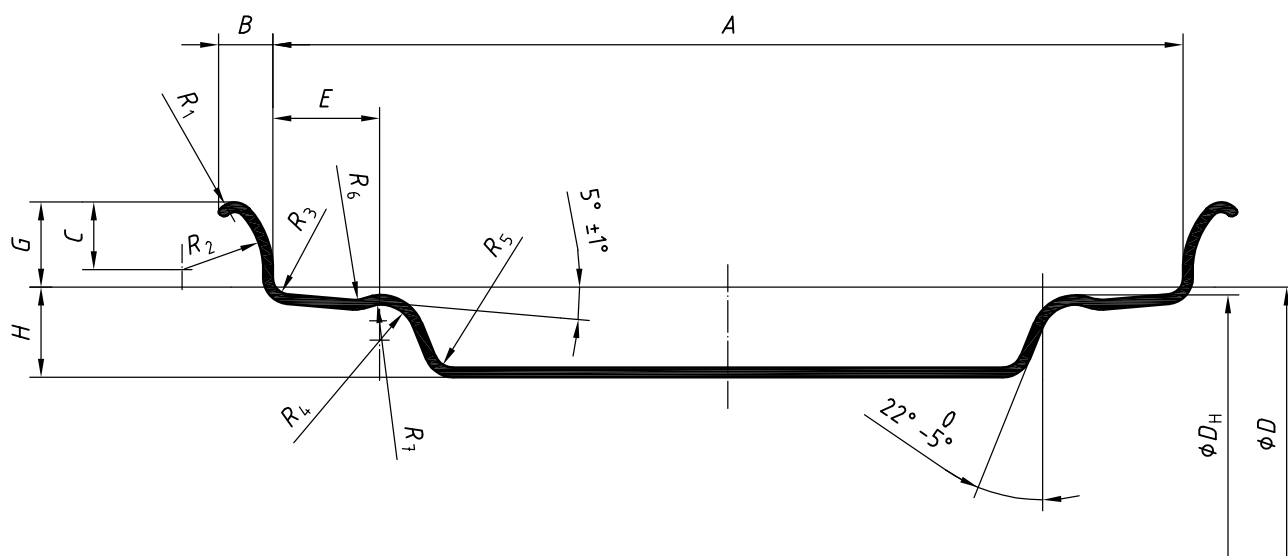
<sup>a</sup> The suffix M/C is optionally allowed.

## 6 Tapered bead seat rims (MT type)

### 6.1 Rim contours

Dimensions and tolerances of tapered bead seat rims shall be as shown in Figure 3 and as given in Table 3.

Optional well contours are shown in Figures 4 and 5, and given in Table 4.



NOTE For  $D$  and  $D_H$ , see 6.3.

**Figure 3 — 5° tapered bead seat rim contours (MT type)**

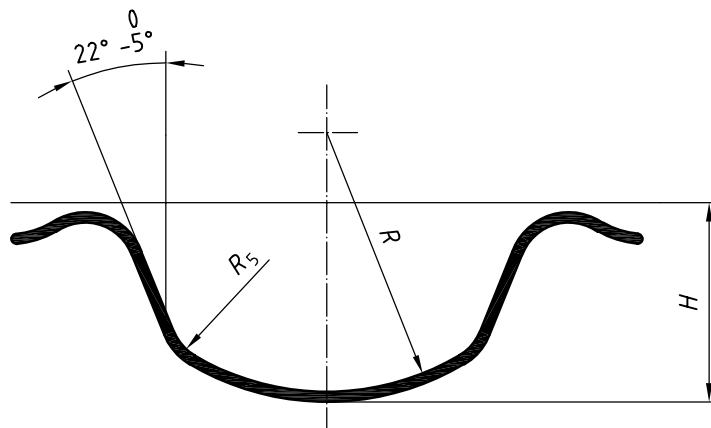
**Table 3 — Dimensions of tapered bead seat rims**

Dimensions in millimetres

Nominal rim width code	A		B min.	C	E <sup>a</sup>		G		H min.	R <sub>1</sub> min.	R <sub>2</sub>	R <sub>3</sub> max.	R <sub>4</sub> ± 0,5	R <sub>5</sub> <sup>b</sup> min.	R <sub>6</sub> ± 0,5	R <sub>7</sub> ± 0,5
		tol.				tol.		tol.								
MT 1.50	38	+1 -0,5	7,5	6,5	—	—	10	± 0,5	8	3	7	2,5	—	3	—	—
MT 1.60	40,5		9	8,5	10	+0,5 0	12		14		9		12,5		2,5	3
MT 1.85	47			10,5	12		+2 0	14		12	13	5,5				
MT 2.15	55		+1,5 -1		9	10,5			+2 0				14	12	13	5,5
MT 2.50	63,5															
MT 2.75	70															
MT 3.00	76															
MT 3.50	89															
MT 3.75	95															
MT 4.00	101,5															
MT 4.25	108															
MT 4.50	114,5															
MT 5.00	127															
MT 5.50	140															
MT 6.00	152,5															
MT 6.25	159															
MT 6.50	165															
MT 7.00	178															
MT 7.50	190,5															
MT 8.00	203															
MT 8.50	216															
MT 9.00	228,5															
MT 9.50	241,5															

<sup>a</sup> E = hump location. See Figure 6 and Table 5 for rims without humps.

<sup>b</sup> For MT 2.50 and larger rims, the well contour may be a rounded shape with R = full radius. See Option 2, Figure 5.



**Key**  
*R* full radius

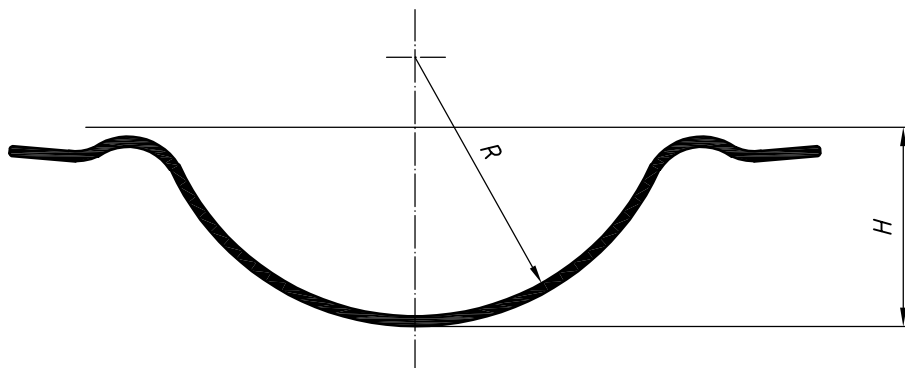
**Figure 4 — Well contour — Option 1**

**Table 4 — Well contour — Option 1**

Dimensions in millimetres

Nominal rim width code	$R_5^a$ min.	$R$ min.
MT 1.85	3	20
MT 2.15		
MT 2.50		30
MT 2.75		
MT 3.00		40
MT 3.50 <sup>b</sup>		

<sup>a</sup> For MT 2.50 and larger rims, the well contour may be a rounded shape with  $R$  = full radius. (See Option 2, Figure 5.)  
<sup>b</sup> Well contour dimensions apply also for wider nominal width codes.



**Key**  
*R* full radius

**Figure 5 — Well contour — Option 2**



## 6.2 Bead seat contours

Bead seat contours for rims without hump shall be as shown in Figure 6 and as given in Table 5.

Rims without hump shall only be used with tyres for tube-type applications.

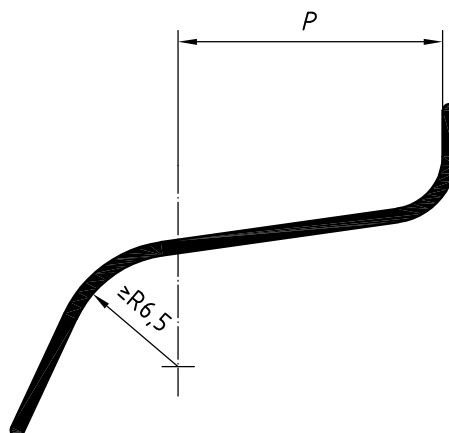


Figure 6 — Bead seat contours for rims without hump

Table 5 — Bead seat contours for rims without hump

Dimensions in millimetres

Nominal rim width code	$P$ +2 0
MT 1.50	4
MT 1.60	5
MT 1.85	8
MT 2.15	11

## 6.3 Rim diameter and hump circumference

The nominal rim diameter code, specified rim diameter and hump circumference shall be as given in Table 6.

Annex A provides a procedure that may be used for determining the measuring rim diameter and the measuring rim circumference when an 8 mm ball tape is used for checking MT rims.

**Table 6 — Specified rim diameters and hump circumferences for MT rim contours**

Dimensions in millimetres

Nominal rim diameter code	Specified rim diameter <sup>a</sup> <i>D</i>	Hump circumference $\pi D_H$ +2 -1
13 M/C	332,2	1 041,5
14 M/C	357,6	1 121,3
15 M/C	383	1 201,2
16 M/C	406	1 273,4 <sup>b</sup>
17 M/C	433,8	1 360,7
18 M/C	459,2	1 440,5
19 M/C	484,6	1 520,3
20 M/C	510	1 600,1
21 M/C	535,4	1 679,9
23 M/C	584,7	1 837,8

NOTE "M/C" suffix for nominal rim diameter codes 16 M/C and above is optional for rims manufactured before May 2003.

<sup>a</sup> The tolerance on the bead seat periphery is  $^{+1,5}_{-0,5}$  mm.  
<sup>b</sup> For code 16 M/C, the tolerance on the bead seat periphery is  $\pm 1$  mm.

## 7 Permitted rim widths

7.1 Permitted rim widths for the code-designated series of motorcycle tyres shall be in accordance with Table 7.

NOTE For permitted rim widths for the metric series of motorcycle tyres, see ISO 5751-3.

**Table 7 — Permitted rim widths**

Tyre section	Permitted rim widths <sup>a</sup>
2.00	1.10; 1.20; 1.35
2.25	1.20; 1.35; 1.40; 1.50; 1.60
2.50	1.35; 1.40; 1.50; 1.60
2.75	1.40; 1.50; 1.60; 1.85
3.00	1.60; 1.85; 2.15
3.25	1.85; 2.15; 2.50
3.50	1.85; 2.15; 2.50
3.75	1.85; 2.15; 2.50
4.00	2.15; 2.50; 2.75; 3.00
4.25	2.15; 2.50; 2.75; 3.00
4.50	2.15; 2.50; 2.75; 3.00
5.00	2.50; 2.75; 3.00; 3.50

<sup>a</sup> MT contours may also apply. The measuring rim width for a given tyre section shall be obtained in accordance with ISO 4249-1:1985, Table 3.

## Annex A (informative)

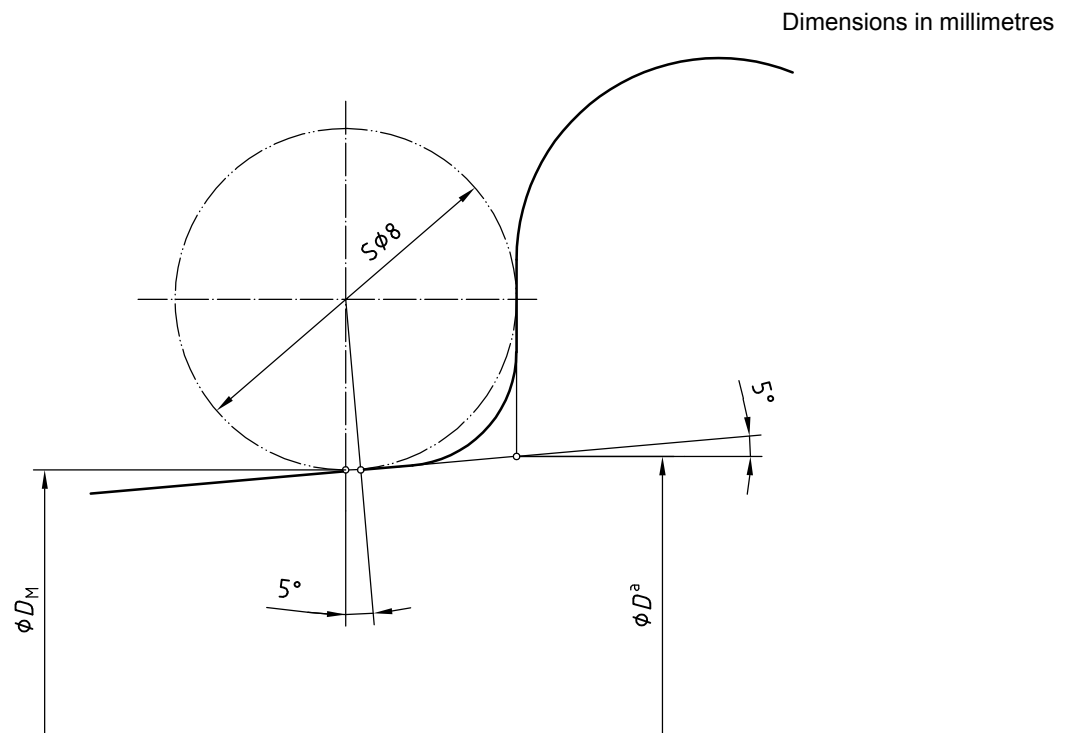
### Rim circumference measurement — Tapered bead seat (MT type) rims

The bead seat rim circumference measurements shall be made using a tape gauge the length of which is related to a mandrel with diameter  $D_M$ .

The tolerance on this diameter is  ${}^0_{-0,15}$  mm.

To ensure accuracy, each bead seat shall be measured separately.

When an 8 mm ball tape is used for checking tapered bead seat rims, the dimensions given in Figure A.1 and Table A.1 apply.



<sup>a</sup> Specified rim diameter.

Figure A.1 — Rim circumference measurement

**Table A.1 — Rim circumference measurement**

Dimensions in millimetres

Nominal rim diameter code	Diameter $D_M$	Circumference $\pi D_M$ +1,5 -0,5
13 M/C	331,53	1 041,5
14 M/C	356,93	1 121,3
15 M/C	382,33	1 201,1
16 M/C	405,33	1 273,4 <sup>a</sup>
17 M/C	433,13	1 360,7
18 M/C	458,53	1 440,5
19 M/C	483,93	1 520,3
20 M/C	509,33	1 600,1
21 M/C	534,73	1 679,9
23 M/C	584,03	1 834,8

<sup>a</sup> For code 16 M/C, the tolerance on the circumference is  $\pm 1$  mm.

## Bibliography

- [1] ISO 3911, *Wheels and rims for pneumatic tyres — Vocabulary, designation and marking*
- [2] ISO 4000-2, *Passenger car tyres and rims — Part 2: Rims*
- [3] ISO 4249-2, *Motorcycle tyres and rims (Code-designated series) — Part 2: Tyre load ratings*
- [4] ISO 5751-3, *Motorcycle tyres and rims (metric series) — Part 3: Range of approved rim contours*



## **SRI LANKA STANDARDS INSTITUTION**

The Sri Lanka Standards Institution (SLSI) is the National Standards Organization of Sri Lanka established under the Sri Lanka Standards Institution Act No. 6 of 1984 which repealed and replaced the Bureau of Ceylon Standards Act No. 38 of 1964. The Institution functions under the Ministry of Science & Technology.

The principal objects of the Institution as set out in the Act are to prepare standards and promote their adoption, to provide facilities for examination and testing of products, to operate a Certification Marks Scheme, to certify the quality of products meant for local consumption or exports and to promote standardization and quality control by educational, consultancy and research activity.

The Institution is financed by Government grants, and by the income from the sale of its publications and other services offered for Industry and Business Sector. Financial and administrative control is vested in a Council appointed in accordance with the provisions of the Act.

The development and formulation of National Standards is carried out by Technical Experts and representatives of other interest groups, assisted by the permanent officers of the Institution. These Technical Committees are appointed under the purview of the Sectoral Committees which in turn are appointed by the Council. The Sectoral Committees give the final Technical approval for the Draft National Standards prior to the approval by the Council of the SLSI.

All members of the Technical and Sectoral Committees render their services in an honorary capacity. In this process the Institution endeavours to ensure adequate representation of all view points.

In the International field the Institution represents Sri Lanka in the International Organization for Standardization (ISO), and participates in such fields of standardization as are of special interest to Sri Lanka.

## **SLS CERTIFICATION MARK**

*The Sri Lanka Standards Institution is the owner of the registered certification mark shown below. Beneath the mark, the number of the Sri Lanka Standard relevant to the product is indicated. This mark may be used only by those who have obtained permits under the SLS certification marks scheme. The presence of this mark on or in relation to a product conveys the assurance that they have been produced to comply with the requirements of the relevant Sri Lanka Standard under a well designed system of quality control inspection and testing operated by the manufacturer and supervised by the SLSI which includes surveillance inspection of the factory, testing of both factory and market samples.*

*Further particulars of the terms and conditions of the permit may be obtained from the Sri Lanka Standards Institution, 17, Victoria Place, Elvitigala Mawatha, Colombo 08.*

